

**Huntsville Utilities  
Mobile Home Service Requirements**

**Sections:**

**Scope**

**General**

**Meter Point with Overhead Service**

**Meter Point with Underground Service**

**Acceptable Wiring Methods from Mobile Home to Meter Point**

**Meter Bases and Meter Base Locations**

**Inspections When No Local Agency Has Jurisdiction**

**Exceptions**

**Scope**

This document is meant to describe Huntsville Utilities' requirements for a typical residential service of 200 amps or less to a mobile home. These specifications are not meant to over-ride any local code requirements, including the National Electric Code or National Electric Safety Code.

**General**

1. No service will be connected without an inspection from the appropriate local inspection agency. Either Huntsville Utilities or the inspection agency can deny connection of service if their requirements are not met. Approval from one does not guarantee approval of the other.
2. Huntsville Utilities requires a health release before providing service to any mobile home. The customer can obtain a health release by having the sewage and water system inspected by the appropriate county health departments.
3. Huntsville Utilities will provide only one delivery point per building.
4. The customer is encouraged to contact the appropriate inspection agency for local requirements (we can provide a list of agencies with their contact information).
5. Permanent house numbers must be installed on the mobile home or on the mailbox and must be visible from the street. House numbers must also be installed on the meter base.
6. The necessary electrical distribution infrastructure must be already in place to provide service.
7. Customer must call 535-1255 to set up an account before a service will be installed. This may require a visit to one of our offices at 112 Spragins Street or 1145 Jordan Road.
8. Huntsville Utilities will provide and install the service conductor from the power source to the customer supplied and installed meter point.
9. Certain materials purchased and installed by the customer must be approved by Huntsville Utilities as detailed in this specification.

**Meter Point with Overhead Service  
Reference Drawing MP-1**

1. Overhead Service can only be installed across the land deeded to the building it is serving, or in a public right of way or within an easement for that purpose, and may not be installed over any building or structure.
2. Huntsville Utilities will provide and install the service conductor from the power source to the customer supplied and installed weatherhead. There must be at least 18" of cable extending from the weatherhead. Check with the local inspection agency for conductor size.
3. The customer provide an install a pole, weatherhead, meter base, disconnect, and other associated hardware as indicated on Drawing MP-1. A taller pole may be required to meet vertical clearance of 10' above the ground at any point and 12' above a driveway at any point.
4. The maximum distance from this pole to Huntsville Utilities' power source is 100'. Contact Engineering Services at 535-1315 to determine the correct power source or if distance is greater than 100'.
5. The customer must provide and install a 5/8" galvanized eyebolt near the top of the pole.

**Meter Point with Underground Service  
Reference Drawing MP-2 and MP-3**

1. Huntsville Utilities underground electric service drop will not be installed under any building, mobile home, or railroad; nor will it be installed across property other than that being serviced without an easement from the owner of that property.
2. Before planning or installing any facilities for underground service, contact Huntsville Utilities Engineering Services Department at 256-535-1315.

**Acceptable Wiring Methods from Mobile Home to Meter Point  
Reference Drawings MP-4a and MP-4b**

1. Huntsville Utilities will provide and install the service conductor from the power source to the meter base (for underground services) or to the weatherhead (for overhead services).
2. The customer must provide and install the conductor from the mobile home to the Huntsville Utilities point of service (weatherhead for overhead services; meter base for underground service). Acceptable wiring methods are indicated in the drawings but are not intended to over-ride any requirements from local inspection agencies.

## Meter Bases and Meter Base Locations

1. Customer must provide and install a meter base or meter pedestal. Meter base or pedestal must be from Huntsville Utilities' current list of approved meter bases (see publication of approved meter bases).
2. A ground rod and ground wire must be installed by the customer according to local code. The main switch box must be bonded to the ground rod. The ground rod must also be accessible to any communication companies for bonding. Failure of all services to the home to bond to this ground rod could result in equipment damage.
3. Meter base must be located at the point of the house closest to the point of attachment to Huntsville Utilities' power source (call 535-1315 if you need a representative to determine this point). Meter base must be installed within line of sight to this source.
4. Meter base must be installed on a front wall of the house, or side wall within 5' of the front, at a vertical distance of 4'6" to 5'6" from finished grade to the center of the meter glass.
5. Meter base location must be accessible for reading and maintenance.

## Inspections When No Local Agency Has Jurisdiction

1. The customer is required to obtain all health, electrical and building inspections according to local jurisdiction.
2. Where there is no local agency performing inspections, Huntsville Utilities will ensure basic requirements (as described in this section of this document) are met before connecting service.
3. Service Entrance Cable Sizes based on Main Disconnect Size

<u>Main Size</u>	<u>Conductor Size</u>	<u>Neutral Size</u>
100 amps	#4 copper	#8 copper
	#2 aluminum	#6 aluminum
200 amps	2/0 copper	#4 copper
	4/0 aluminum	#2 aluminum

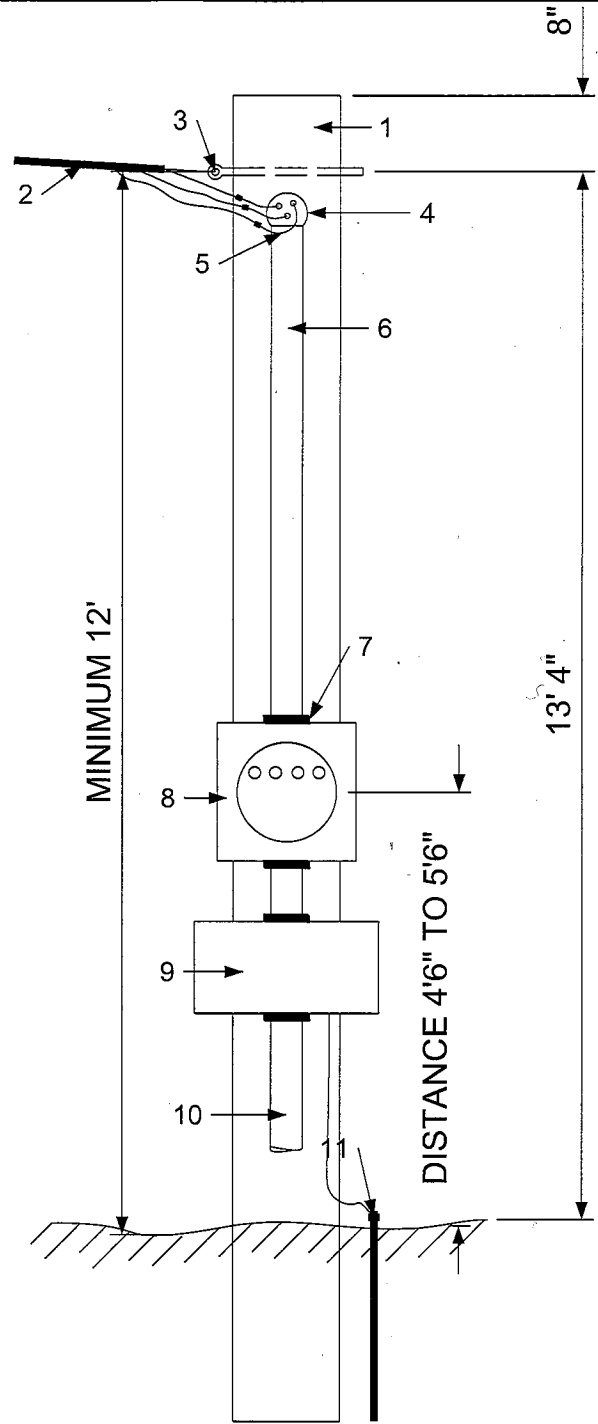
A 50 amp UL approved service cord (pigtail) with a four wire plug is acceptable when used with property sized main breaker and receptacles.

4. The customer must supply and install a copper ground rod a minimum of 8' in length (minimum of 7'6" in ground) and shall have a minimum diameter of 1/2". If galvanized pipe is used, a minimum diameter of 3/4" is required.
5. Where the service entrance cable is longer than 36" a 4-wire entrance cable is required.

## Exceptions

1. Any exceptions must be presented to Huntsville Utilities Engineering Services Department. Call 535-1315 to determine which representative should help you (based on geographic location).
2. Huntsville Utilities will normally provide only one service per lot. If the mobile home is to be located on a lot with another house, building or mobile home please contact Engineering Services at 535-1315 to determine if this is acceptable.

1. Customer to purchase and install a creosote treated pole with a minimum diameter of 6" at the ground line and a (minimum length of 18-feet) (4-feet below ground and 12-feet above the ground).
2. Huntsville Utilities will pull service to customers pole provided the pole is tall enough to hold the service wire at least 12 feet above the ground at any point, and 12-feet above driveways. The maximum distance from a Huntsville Utilities' Engineering Services Department).
3. Customer to purchase and install a 5/8" galvanized eyebolt near the top of the pole.
4. Customer to purchase and install a weatherhead.
5. Customer to provide a minimum of 18" of entrance cable for making connections at the weatherhead. Huntsville Utilities will make the connections from the service wire to customers' entrance cable.
6. Customer to purchase and install either 2" galvanized or SC and 80 PVC conduit with three single conductors or, service entrance cable from meter base to weatherhead and from meter base to main disconnect. PVC allowed when service not attached to mast or weatherhead. See page 1 for wire size.
7. Customer to purchase and install 2" hubs for conduits or watertight connectors for service entrance cable.
8. Customer must purchase and install Huntsville Utilities approved meter base. The center of the meter base shall be 4'6" to 5'6" above ground level. Customer must make all connections in the meter base.
9. Customer to purchase and install weatherproof disconnect with proper sized fuses or breakers.
10. Customer must protect wire from main disconnect to mobile home with 2" PVC or "Sealtight" conduit unless a 50 amp service cord (pigtail) is used. See drawings MP-4a and MP-4b for acceptable wiring methods from service pole to mobile home.
11. Customer to purchase and install a ground rod, a minimum of 8-feet in length with 7.5-feet in the ground. The ground rod shall have a minimum diameter of 1/2" or, 3/4" if galvanized pipe is used. Customer must purchase and install a #4 bare copper wire from the main weatherproof disconnect to the ground rod.



NOTE: THIS DRAWING IS PART OF HUNTSVILLE UTILITIES SPECIFICATIONS FOR MOBILE HOME SERVICE REQUIREMENTS, WHICH MUST BE FOLLOWED IN ENTIRETY.

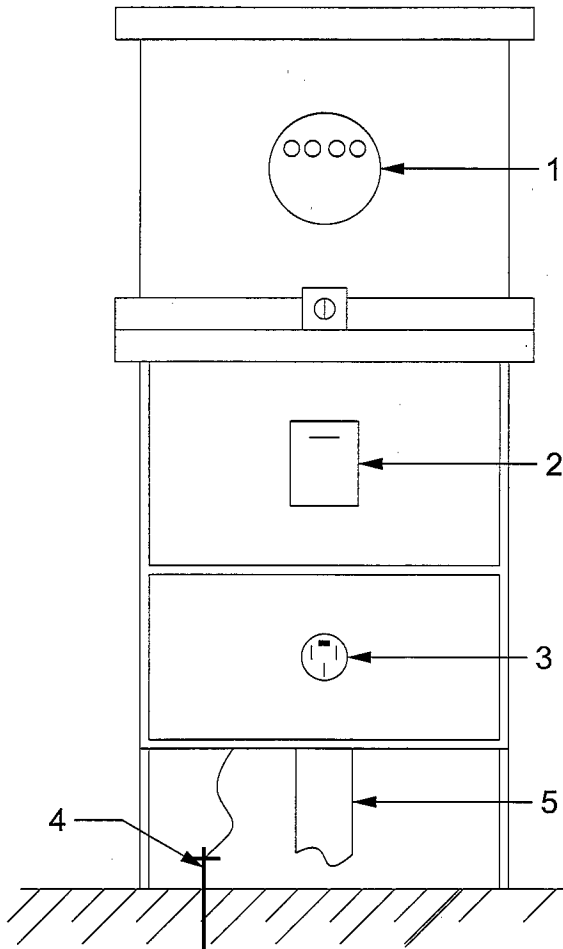
DWN J. BAILEY DAT 10/21/08	NO.	DATE	REVISION	HUNTSVILLE UTILITIES ELECTRIC DEPARTMENT	
CKD DAT				SUBJECT DETAIL	METERING POINT REQUIREMENTS FOR AN OVERHEAD SERVICE TO A MOBILE HOME
APP DAT					
APP DAT					MP-1
APP DAT				GENERAL SPECIFICATIONS FOR INSTALLATION OF ELECTRIC SERVICES	

CUSTOMER OWNED AND INSTALLED UNDERGROUND METER PEDESTAL

NOTE: Contact Huntsville Utilities Engineering Services Department before planning, or installing any facilities for underground service.

1. Customer to purchase, install and maintain an underground service and meter pedestal for an underground service. The pedestal must be included on the Huntsville Utilities Approved Material List.
2. The pedestal must contain the proper size breaker(s).
3. Pedestal may be purchased with a receptacle for 50 amp service cable (pigtail), when required.
4. Customer must furnish, and install an 8-foot ground rod, 7-1/2 feet installed in ground. The ground rod shall have a minimum diameter of 1/2", or 3/4", if galvanized pipe is used.
5. Customer must furnish and install 3" gray schedule 40 PVC conduit, with pull string from pedestal to Huntsville Utilities Facilities designated by the Engineering Services Department. See MP-4 for wiring requirement. Huntsville Utilities will install underground service cable from power source and connect in meter pedestal.

NOTE: ONLY ONE CIRCUIT CAN BE WIRED INTO METER PEDESTAL.



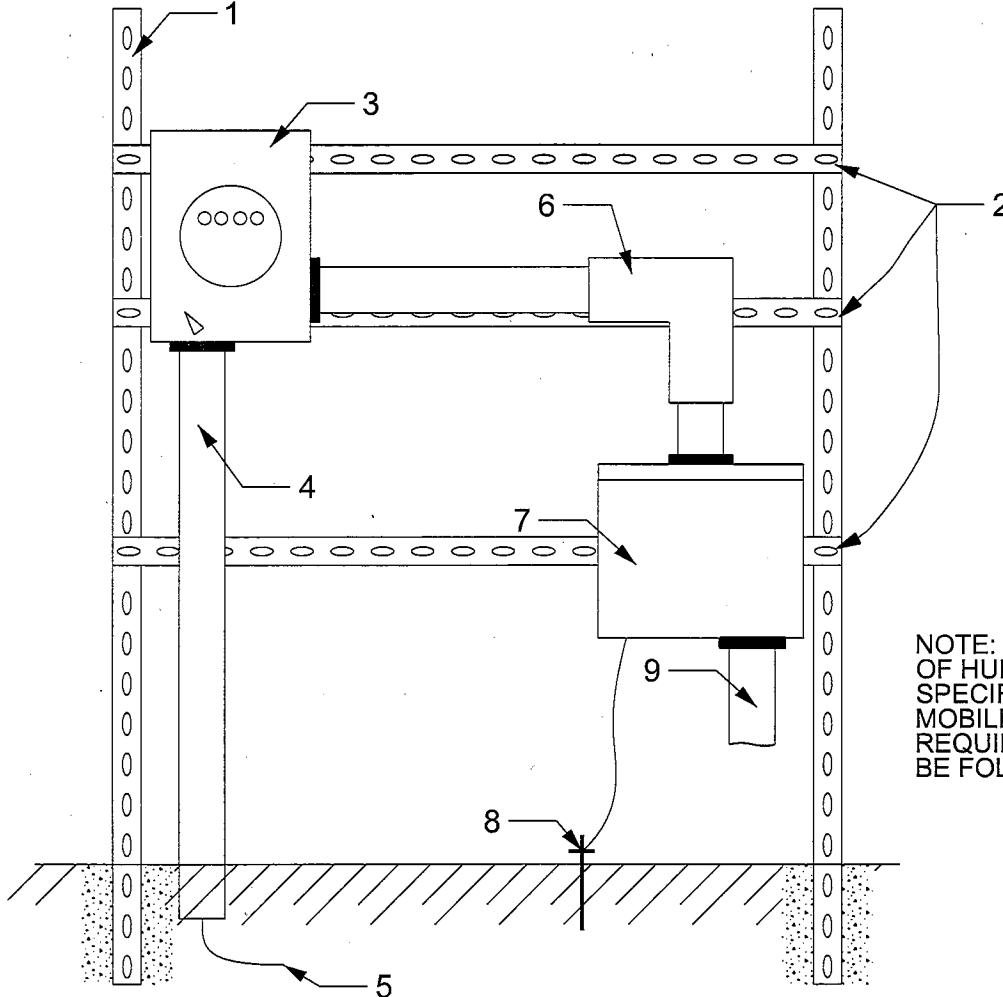
NOTE: THIS DRAWING IS PART OF HUNTSVILLE UTILITIES SPECIFICATIONS FOR MOBILE HOME SERVICE REQUIREMENTS, WHICH MUST BE FOLLOWED IN ENTIRETY.

DWN J. BAILEY DAT 10/21/08	NO.	DATE	REVISION	HUNTSVILLE UTILITIES ELECTRIC DEPARTMENT	
CKD DAT				SUBJECT DETAIL	METERING POINT REQUIREMENTS FOR AN UNDERGROUND SERVICE TO A MOBILE HOME
APP DAT					
APP DAT					MP-2
APP DAT				GENERAL SPECIFICATIONS FOR INSTALLATION OF ELECTRIC SERVICES	

CUSTOMER OWNED AND INSTALLED UNDERGROUND SERVICE METER PEDESTAL

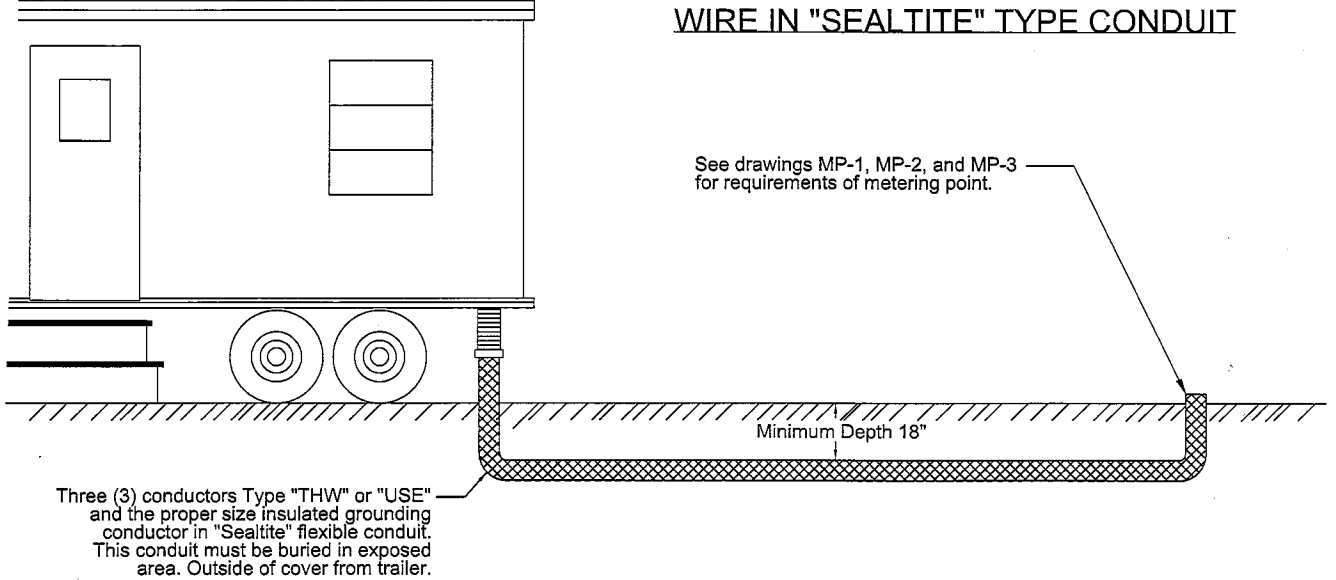
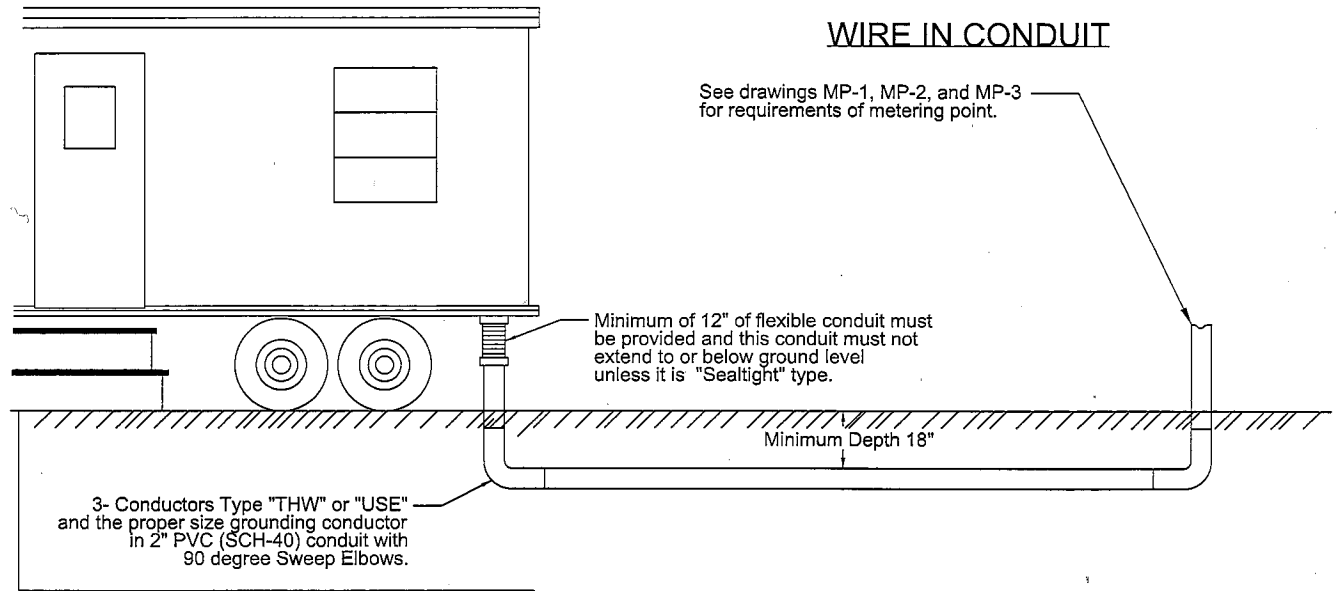
NOTE: Contact Huntsville Utilities Engineering Services Department before planning, or installing any facilities for underground service.

1. Customer to purchase and install two double sided-deep uni-strut / 6 foot vertical install two feet (2') in the ground and embedded in concrete.
2. Customer to install uni-strut cross bracing as needed.
3. Customer must purchase and install a Huntsville Utilities approved meter base 4-5 feet above the ground. Huntsville Utilities will make all connections in meter base.
4. Customer must furnish and install a 3" gray schedule 40 PVC conduit with pull string from the left side of the meter base to Huntsville Utilities facilities designated by Engineering Services Department.
5. Huntsville Utilities to install service from power source into meter base.
6. Customer to purchase and install 2" or larger conduit with weathertite connectors and three (3) single conductors from meter base to main disconnect.
7. Customer to purchase and install weatherproof disconnect with proper sized fuses or breakers.
8. Customer to purchase and installed a ground rod, a minimum of 8-feet long 7.5 feet in the ground rod shall have a minimum diameter of 1/2" or 3/4", if galvanized pipe is used.
9. Customer must protect wire from main disconnect to mobile home with 2" or larger PVC or "Sealtite" conduit unless a 50 amp service cord (pigtail) is used. See drawing MP-4 for acceptable wiring methods from metering point to mobile home.



NOTE: THIS DRAWING IS PART OF HUNTSVILLE UTILITIES SPECIFICATIONS FOR MOBILE HOME SERVICE REQUIREMENTS, WHICH MUST BE FOLLOWED IN ENTIRETY.

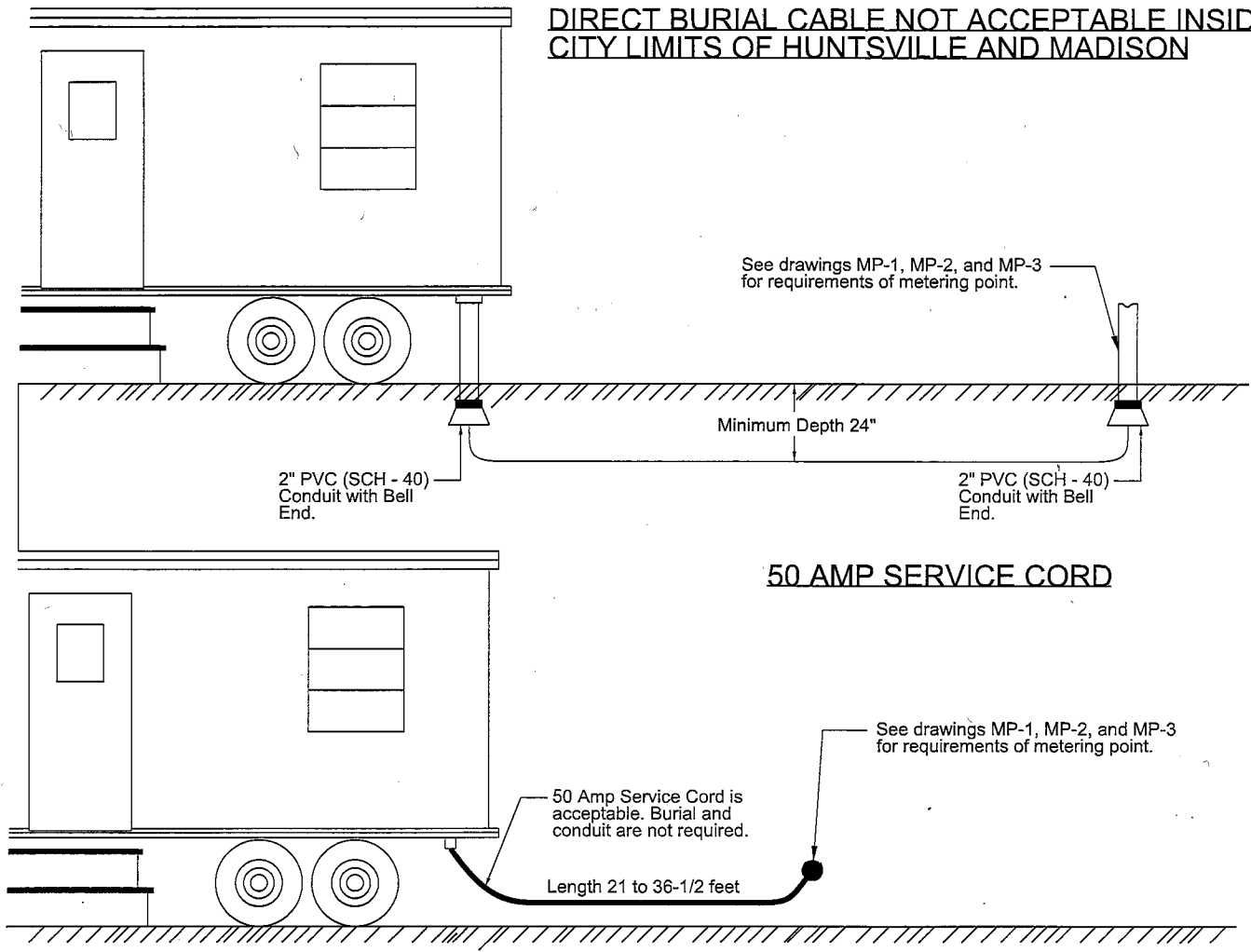
DWN J. BAILEY DAT 11/17/08	NO.	DATE	REVISION	HUNTSVILLE UTILITIES ELECTRIC DEPARTMENT	
CKD DAT				SUBJECT DETAIL	METERING POINT REQUIREMENTS FOR AN UNDERGROUND SERVICE TO A MOBILE HOME
APP DAT					
APP DAT					
APP DAT	GENERAL SPECIFICATIONS FOR INSTALLATION OF ELECTRIC SERVICES				



NOTE: THIS DRAWING IS PART OF HUNTSVILLE UTILITIES SPECIFICATIONS FOR MOBILE HOME SERVICE REQUIREMENTS, WHICH MUST BE FOLLOWED IN ENTIRETY.

DWN J. BAILEY DAT 10/21/08	NO.	DATE	REVISION	HUNTSVILLE UTILITIES ELECTRIC DEPARTMENT	
CKD DAT					
APP DAT				METERING POINT REQUIREMENTS FOR AN OVERHEAD SERVICE TO A MOBILE HOME	
APP DAT					
APP DAT	GENERAL SPECIFICATIONS FOR INSTALLATION OF ELECTRIC SERVICES				

**DIRECT BURIAL CABLE NOT ACCEPTABLE INSIDE CITY LIMITS OF HUNTSVILLE AND MADISON**



NOTE: THIS DRAWING IS PART OF HUNTSVILLE UTILITIES SPECIFICATIONS FOR MOBILE HOME SERVICE REQUIREMENTS, WHICH MUST BE FOLLOWED IN ENTIRETY.

DWN J. BAILEY DAT 10/21/08	NO.	DATE	REVISION	HUNTSVILLE UTILITIES ELECTRIC DEPARTMENT	
CKD DAT					
APP DAT				MP-4b	
APP DAT					
APP DAT	GENERAL SPECIFICATIONS FOR INSTALLATION OF ELECTRIC SERVICES				