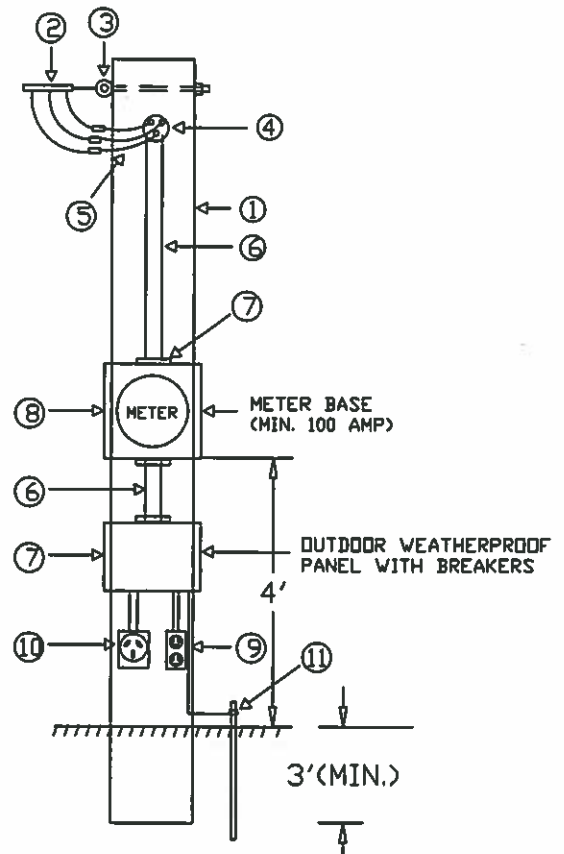


ALL INSTALLATIONS TO MEET REQUIREMENTS OF THE NATIONAL ELECTRIC CODE

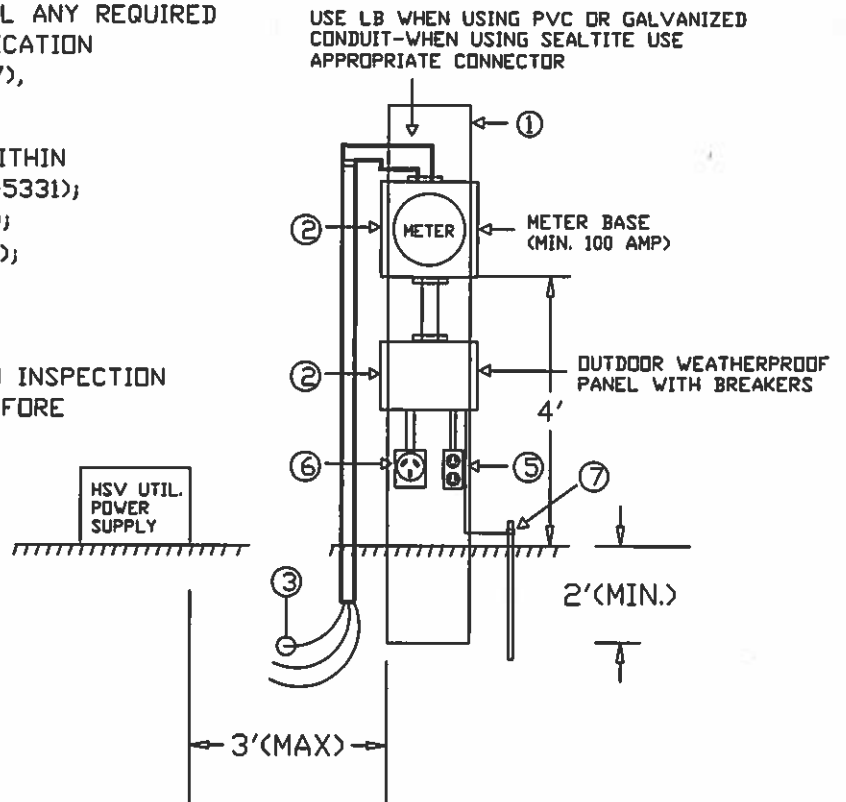
- ① CUSTOMER TO PURCHASE AND INSTALL A TREATED POLE WITH A MINIMUM DIAMETER OF 6 INCHES AT THE GROUND LINE OR A 4 X 4 WITH ADEQUATE BRACES/GUYS.
- ② HUNTSVILLE UTILITIES WILL PULL SERVICE TO CUSTOMERS TEMPORARY POLE. THE POLE MUST BE EMBEDDED A MINIMUM OF 3 FEET IN GROUND WITH 10 FEET CLEARANCE ABOVE GROUND WHERE SERVICE IS NOT SUBJECT TO VEHICULAR CLEARANCE, AND 15 FEET CLEARANCE ABOVE GROUND WHERE SUBJECT TO TRAFFIC. TEMP POLES ARE TO BE SET AT A MINIMUM OF 15 FT FROM UTILITY POLE. MAXIMUM DISTANCE 100 FT. FOR A 6INCH POLE OR 75 FT MAX DISTANCE FOR A 4 X 4.
- ③ CUSTOMER TO PURCHASE AND INSTALL A 5/8 INCH GALVANIZED EYEBOLT NEAR TOP OF POLE.
- ④ CUSTOMER TO PURCHASE AND INSTALL WEATHERHEAD.
- ⑤ CUSTOMER TO PROVIDE AT THE WEATHERHEAD, A MINIMUM OF 18 INCHES OF SERVICE ENTRANCE CABLE FOR MAKING CONNECTION TO HUNTSVILLE UTILITIES SERVICE DROP.
- ⑥ CUSTOMER TO PURCHASE AND INSTALL EITHER: THREE SINGLE CONDUCTOR CABLE IN PVC OR GALVANIZED; OR SERVICE ENTRANCE CABLE WITH WEATHERPROOF CONNECTIONS AND 'C' CLAMPS. CABLE SHOULD BE INSTALLED FROM METER BASE TO MAIN DISCONNECT. (WIRE SIZE AS PER NATIONAL ELECTRIC CODE).
- ⑦ CUSTOMER TO PURCHASE AND INSTALL METER BASE (MINIMUM 100 AMP, MUST BE ON HUNTSVILLE UTILITIES APPROVED METER SOCKET LIST), WEATHERPROOF BREAKER PANELS, GROUND FAULT PROTECTED WEATHERPROOF PROOF RECEPTACLES, PER NATIONAL ELECTRIC CODE.
- ⑧ METER BASE TO BE PLACED 4 TO 5 FEET ABOVE THE GROUND.
- ⑨ ALL 120 VOLT CIRCUITS REQUIRE GFI BREAKER, OR GFI RECEPTACLE (GFI = GROUND FAULT INTERRUPTER).
- ⑩ 240 VOLT CIRCUITS DO NOT REQUIRE A GROUND FAULT BREAKER.
- ⑪ CUSTOMER TO PURCHASE AND INSTALL A 5/8 INCH COPPER CLAD GROUND ROD; A MINIMUM OF 8 FEET IN LENGTH WITH 7 1/2 FEET DRIVEN IN GROUND. GROUND WIRE TO BE CONNECTED FROM GROUND ROD TO BREAKER PANEL.
- ⑫ LOT MUST BE CLEARLY MARKED WITH ADDRESS OR BUILDING PERMIT
- ⑬ SERVICE WILL NOT BE CONNECTED UNTIL ANY REQUIRED INSPECTIONS HAVE BEEN PASSED, APPLICATION FOR SERVICE HAS BEEN MADE (535-1317), FEES/DEPOSITS HAVE BEEN PAID.
- ⑭ TEMPORARY SERVICE POLES LOCATED WITHIN THE CITY LIMITS OF HUNTSVILLE (427-5331); MADISON (772-5644); TRIANA (772-0151); MADISON COUNTY INSPECTION (746-2950); AND THE TOWN OF OWENS CROSSROADS (725-4163). MUST OBTAIN A PERMIT AND MEET ALL REQUIREMENTS OF THE APPROPRIATE INSPECTION DISTRICT. AN INSPECTION RELEASE NUMBER MUST BE OBTAINED BEFORE SERVICE WILL BE CONNECTED BY HUNTSVILLE UTILITIES.



DWN DAT	JLP 7-18-05	NO.	DATE	REVISION	HUNTSVILLE UTILITIES ELECTRIC DEPARTMENT		
CKD DAT					SUBJECT OVERHEAD TEMPORARY POLE DETAIL	OHTPL	
APP DAT							
APP DAT							
APP DAT							
SUPERSEDES _____					SCALE _____	SH _____ OF _____ SHEETS	REV. 1

ALL INSTALLATIONS TO MEET REQUIREMENTS OF THE NATIONAL ELECTRIC CODE

- ① CUSTOMER TO PURCHASE AND INSTALL A TREATED POLE WITH A MINIMUM DIAMETER OF 4 INCHES AT THE GROUND LINE. THE POLE MUST BE EMBEDDED A MINIMUM OF 2 FEET IN GROUND WITH A MINIMUM OF 4 FEET CLEARANCE ABOVE GROUND.
- ② CUSTOMER TO PURCHASE AND INSTALL METER BASE (MINIMUM 100 AMP, MUST BE ON HUNTSVILLE UTILITIES APPROVED METER SOCKET LIST), WEATHERPROOF BREAKER PANELS, GROUND FAULT PROTECTED WEATHERPROOF RECEPTACLES, MINIMUM 1 1/4 INCH PVC OR SEALTITE CONDUIT FOR SERVICE ENTRANCE.
- ③ CUSTOMER TO PURCHASE AND INSTALL SERVICE CONDUCTOR WIRES WITH APPROPRIATE UNDERGROUND TYPE (SIZE AND TYPE PER THE NATIONAL ELECTRIC CODE) 5 FEET MINIMUM CABLE PIG TAIL BEYOND CONDUIT FOR HUNTSVILLE UTILITIES TO CONNECT TO THE TRANSFORMER. THE CUSTOMER IS TO MAKE ALL CONNECTIONS IN THE METER BASE.
NOTE: ALL MATERIAL WILL BE MOUNTED SECURELY AND MADE WEATHERPROOF FOR SAFETY.
- ④ METER BASE TO BE PLACED 4 TO 5 FEET ABOVE THE GROUND.
- ⑤ ALL 120 VOLT CIRCUITS REQUIRE GFI BREAKER, OR GFI RECEPTACLE. (GFI = GROUND FAULT INTERRUPTER).
- ⑥ 240 VOLT CIRCUITS DO NOT REQUIRE A GROUND FAULT BREAKER.
- ⑦ CUSTOMER TO PURCHASE AND INSTALL A 5/8 INCH COPPER CLAD GROUND ROD; A MINIMUM OF 8 FEET IN LENGTH WITH 7 1/2 FEET DRIVEN IN GROUND. GROUND WIRE TO BE CONNECTED FROM GROUND ROD TO BREAKER PANEL.
- ⑧ LOT MUST BE CLEARLY MARKED WITH ADDRESS OR BUILDING PERMIT
- ⑨ SERVICE WILL NOT BE CONNECTED UNTIL ANY REQUIRED INSPECTIONS HAVE BEEN PASSED, APPLICATION FOR SERVICE HAS BEEN MADE (535-1317), FEES/DEPOSITS HAVE BEEN PAID.
- ⑩ TEMPORARY SERVICE POLES LOCATED WITHIN THE CITY LIMITS OF HUNTSVILLE (427-5331); MADISON (772-5644); TRIANA (772-0151); MADISON COUNTY INSPECTION (746-2950); AND THE TOWN OF OWENS CROSSROADS (725-4163). MUST OBTAIN A PERMIT AND MEET ALL REQUIREMENTS OF THE APPROPRIATE INSPECTION DISTRICT. AN INSPECTION RELEASE NUMBER MUST BE OBTAINED BEFORE SERVICE WILL BE CONNECTED BY HUNTSVILLE UTILITIES.



DWN DAT	JLP 07-18-05	NO.	DATE	REVISION	HUNTSVILLE UTILITIES ELECTRIC DEPARTMENT		
CKD DAT					SUBJECT UNDERGROUND TEMPORARY POLE DETAIL	UTPL	
APP DAT							
APP DAT							
APP DAT							
SUPERSEDES		SCALE			SH	OF SHEETS	REV. 1